

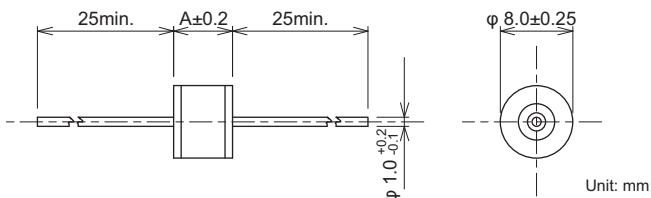
Features

- Quick response for surge.
- High impulse current capacity.
- It can withstand alternating current.
- Excellent insulation resistance and small capacitance.
- Recommendation of ITU-T conformity.

Applications

- Telephone, PBX, Wireless base station, Optical transmission equipments, CATV transmission equipments, Fire alarm systems and Home security systems.

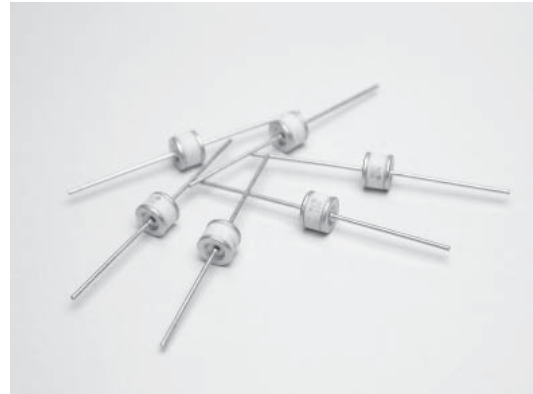
Dimensions



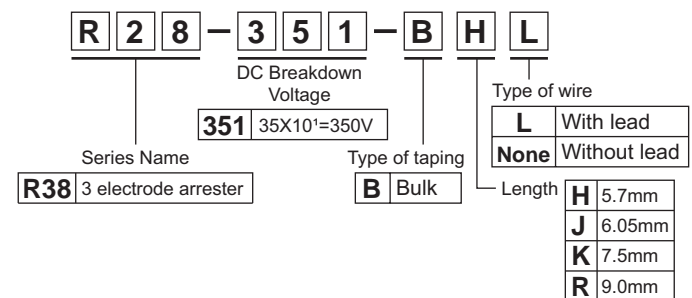
Model Number	A
R28-□□□-BHL	5.7
R28-□□□-BJL	6.05
R28-□□□-BKL	7.5
R28-□□□-BRL	9.0



Safety Standard	File No.
UL :UL497B	E139599
:UL1449 3rd.	E332107



Model numbering system



Electrical Specifications (Low Voltage Type)

(Conforms to ITU-T)

Safety Standard	Model Number	DC Breakdown Voltage 100V/s~2,000V/s (V) ±20	Impulse Sparkover Voltage 100V/μs (V) max	Insulation Resistance (MΩ) min.	Capacitance 1MHz (pF) max.	Impulse Life Test 10/1,000μs (A)300 times	Alternating Discharge Current 50Hz, 1s 10 times (A)	Impulse Discharge Current 8/20ms (A) 10times
UL 497B	R28-900-BHL	90	450	10,000(DC50V)	1.5	100	10	10,000
UL 1449	R28-151-BHL	150	500	10,000(DC100V)				
○	R28-231-BHL	230	600					
○	R28-251-BHL	250	600					
○	R28-301-BHL	300	650					
○	R28-351-BHL	350	750					
○	R28-401-BHL	400	800					
○	R28-471-BHL	470	900					
○	R28-601-BHL	600	1,300					

Electrical Specifications (High Voltage Type)

Safety Standard	Model Number	DC Breakdown Voltage 500V/s (V)±20	Insulation Resistance (MΩ) min.	Capacitance 1MHz (pF) max.	Withstanding Voltage	Impulse Life Test 8/20μs (A)300A times	Impulse Discharge Current 8/20μs (A)	
UL 1449	R28-801-BHL	800	10,000(DC250V)	1.5	-	1000	10,000	
○	R28-102-BHL	1,000	10,000(DC500V)		-			
○	R28-152-BHL	1,500			-			
○	R28-242-BJL	2,400			AC1,250V 3s			
○	R28-302-BKL	3,000			AC1,500V 60s			
○	R28-362-BKL	3,600			AC1,800V 3s			
○	R28-402-BKL	4,000			AC2,000V 60s			
○	R28-452-BKL	4,500			AC3,000V 60s			
○	R28-602-BRL	6,000			10,000(DC1000V)			AC3,000V 60s

*1 Rated voltage AC125V: Approved if it is connected to UL approved varistor (V1.0mA≥270V, D≥φ 14mm).

*2 Rated voltage AC250V: Approved if it is connected to UL approved varistor (V1.0mA≥470V, D≥φ 14mm).



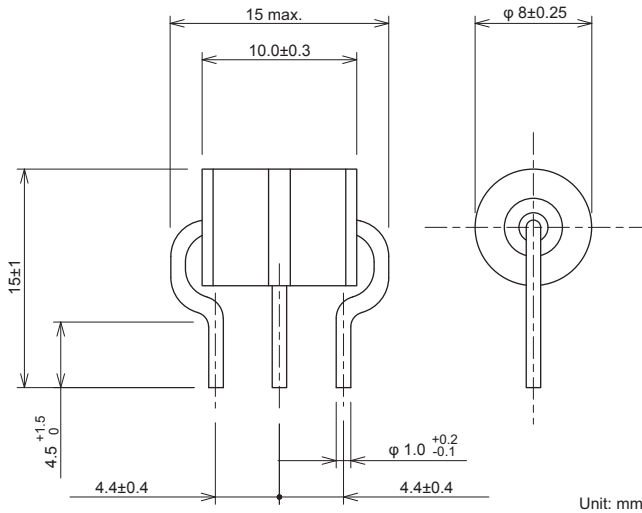
Features

- Quick response for surge.
- High impulse current capacity.
- It can withstand alternating current.
- Excellent insulation resistance and small capacitance.
- Recommendation of ITU-T conformity.

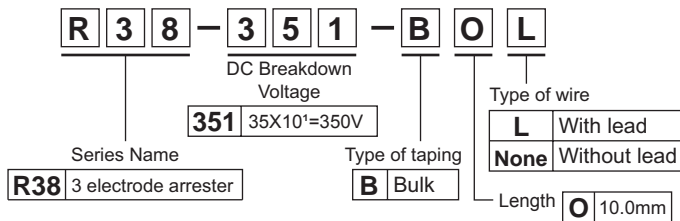
Applications

- Telephone, PBX, Wireless base station, Optical transmission equipments, CATV transmission equipments, Fire alarm systems and Home security systems. RoHS restriction complied.

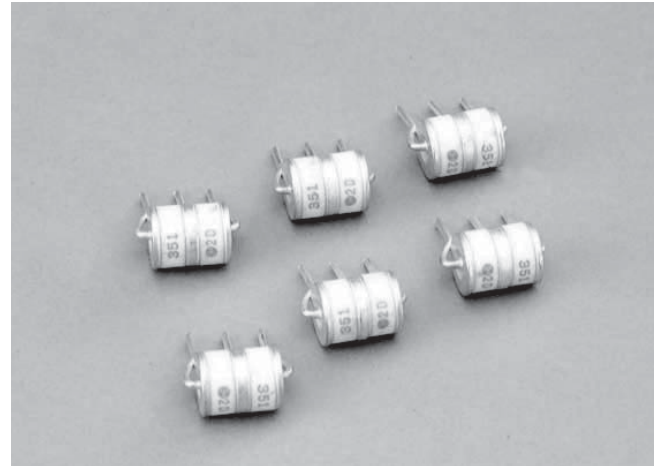
Dimensions



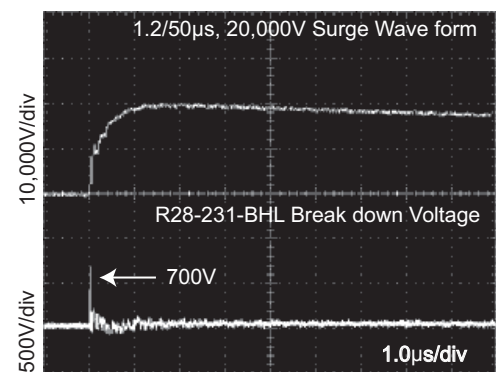
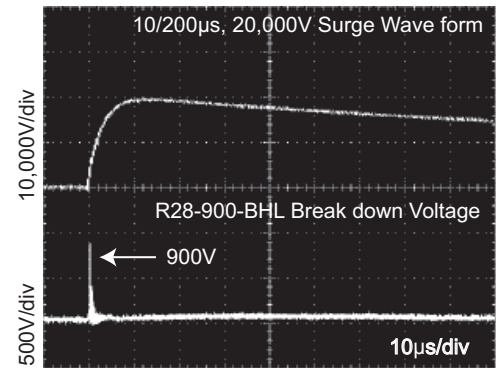
Model numbering system



Safety Standard	File No.
UL :UL497B	E139599



Impulse Absorption Characteristics



Electrical Specifications

(Conforms to ITU-T)

Safety Standard	Model Number	DC Breakdown Voltage 100V/s ~ 2,000V/s (V) ±20%	Impulse Sparkover Voltage 100V/µs (V) max.	Insulation Resistance (MΩ) min.	Capacitance 1MHz max. (pF)	Impulse Life Test 10/1,000µs (A) 300 times	Alternating Discharge Current 50Hz, 1s 10 times (A)	Impulse Discharge Current 8/20µs (A) 10 times
	R38-900-BOL	90	450	10,000(DC50V)	1.5	100	10	10,000
	R38-231-BOL	230	600	10,000(DC100V)				
	R38-251-BOL	250						
	R38-351-BOL	350	750					
	R38-421-BOL	420	900					
	R38-601-BOL	600	1,300					