

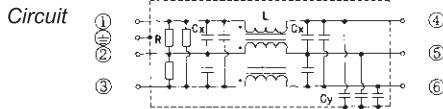
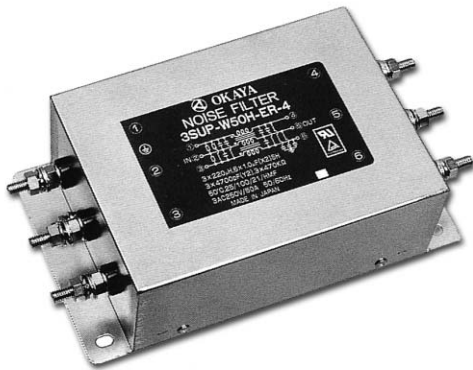


Features

- Three phase filter delta.
- Light and compact size.
- Applies to CE marking.

Applications

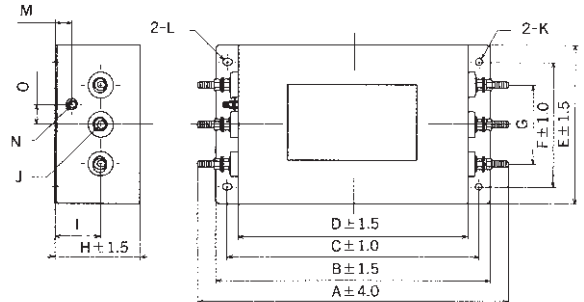
- Inverter power supplies, UPS, NC control systems and Welding machines.



Safety Agency : Standard		File No.
UL	: UL-1283	E78644
TUV	: EN133200	R50056158

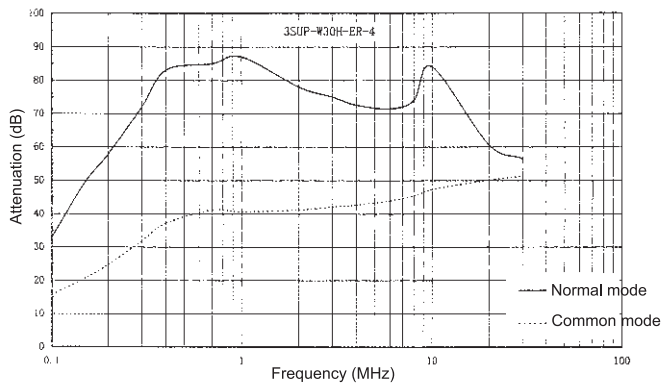
Dimensions

3SUP-W□H-ER-4 (10~150)

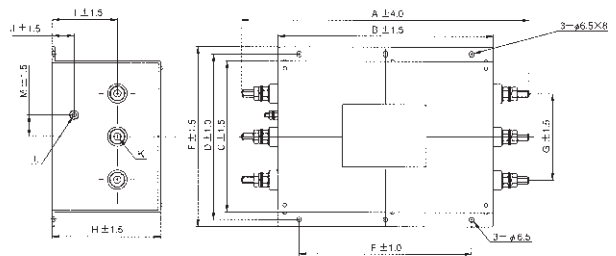


	A	B	C	D	E	F	G	H	I	J	K	L	M	N	O
3SUP-W10H-ER-4	133	125	110	95	110	95	70	55	25	M4	φ4.5	φ4.5×7	10	M4	17.5
3SUP-W20H-ER-4	178	160	145	130	110	95	70	55	25	M5	φ4.5	φ4.5×7	10	M4	17.5
3SUP-W30H-ER-4	178	160	145	130	110	95	70	55	25	M5	φ4.5	φ4.5×7	10	M4	17.5
3SUP-W50H-ER-4	208	190	170	150	110	90	60	60	30	M6	φ5.5	φ5.5×8	10	M4	15
3SUP-W75H-ER-4	270	240	220	200	140	110	70	80	40	M8	φ6.5	φ6.5×8	15	M6	17.5
3SUP-W100H-ER-4	280	240	220	200	140	110	70	80	40	M10	φ6.5	φ6.5×8	15	M6	17.5
3SUP-W150H-ER-4	342	300	280	260	180	150	120	100	50	M10	φ6.5	φ6.5×8	15	M6	30

Static characteristics



3SUP-W□H-ER-4 (200, 250)



Tolerance: ±0.5
Unit: mm

Model number	A	B	C	D	E	F	G	H	I	J	K	L	M
3SUP-W200H-ER-4	380	280	200	220	240	240	120	110	50	20	M12	M6	30
3SUP-W250H-ER-4	400	300	210	230	250	240	120	150	90	30	M12	M6	30

Electrical Specifications

Rated Voltage **250VAC**

Safety Agency	Model Number	Rated Current (A)	Test Voltage	Insulation Resistance	Leakage Current (max)	Voltage Drop (max)	Temperature Rise (max)	Operating Temperature (°C)	Insertion losses			
									Normal Mode (MHz)	Common Mode (MHz)		
	3SUP-W10H-ER-4	10	Line to Line 1000Vrms 50/60Hz 60sec Line to Ground 2500Vrms 50/60Hz 60sec	Line to Ground 6000MΩmin (at 500Vdc)	1.0mA (at 250Vrms 60Hz)	Less than 1.0Vrms	35deg	-25 ~ +50	*1	0.2 ~ 30	*2	0.4 ~ 30
	3SUP-W20H-ER-4	20							*1	0.2 ~ 30	*2	0.4 ~ 30
	3SUP-W30H-ER-4	30							*1	0.2 ~ 30	*2	0.4 ~ 30
	3SUP-W50H-ER-4	50							*1	0.3 ~ 30	*3	0.6 ~ 30
	3SUP-W75H-ER-4	75							*1	0.3 ~ 30	*3	0.6 ~ 30
	3SUP-W100H-ER-4	100							*1	0.3 ~ 30	*3	0.6 ~ 30
	3SUP-W150H-ER-4	150							*4	0.2 ~ 20	*5	1 ~ 20
	3SUP-W200H-ER-4	200							*4	0.2 ~ 20	*5	1 ~ 20
3SUP-W250H-ER-4	250	*5	0.2 ~ 20	*6	1 ~ 20							

Guaranteed attenuation of *1 is 40dB, *2 is 30dB, *3 is 25dB, *4 is 35dB, *5 is 50dB and *6 is more than 15dB.