



# 3SUP-HL-ER-6 SERIES

# NOISE FILTERS



## Features

- Three phase filter delta, high attenuation.
- EN55011 class A & B.
- Applies to CE marking (EN60939 approval by TÜV).

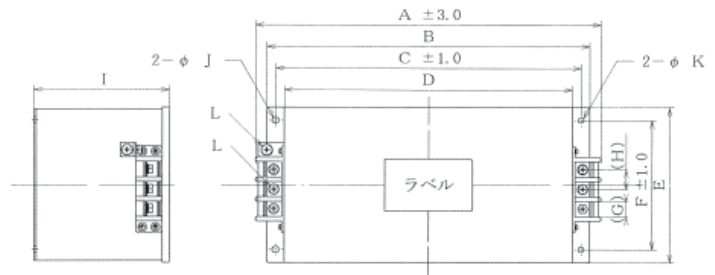
## Applications

- Inverter power supplies, UPS, Servo-operated machinery.



Safety Standard		File No.
UL	:UL1283	E78644
TÜV	:EN60939	R50056176

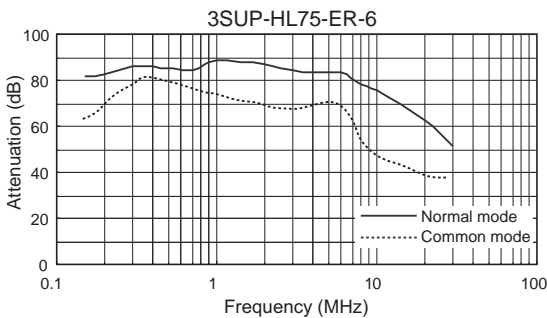
## Dimensions



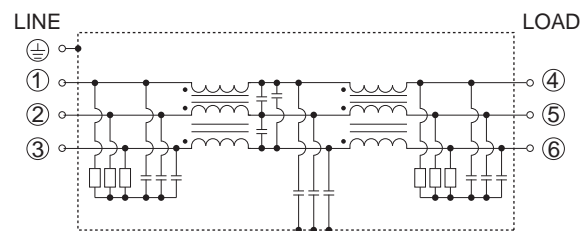
Unit: mm

Model Number	Dimensions(mm)											
	A	B	C	D	E	F	G	H	I	J	K	L
3SUP-HL5-ER-6	226	220	195	180	100	85	13	18	120	5.5x7	5.5	M4
3SUP-HL10-ER-6	226	220	195	180	100	85	13	18	120	5.5x7	5.5	M4
3SUP-HL15-ER-6	226	220	195	180	100	85	13	18	130	5.5x7	5.5	M4
3SUP-HL30-ER-6	246	230	215	200	100	85	13	18	140	5.5x7	5.5	M4
3SUP-HL50-ER-6	286	270	255	240	120	90	13	18	150	5.5x7	5.5	M6
3SUP-HL75-ER-6	396	370	350	330	170	140	18	23	155	6.5x8	6.5	M6
3SUP-HL100-ER-6	396	370	350	330	170	140	18	23	155	6.5x8	6.5	M6
3SUP-HL150-ER-6	484	440	420	400	200	170	25	30	200	6.5x8	6.5	M8
3SUP-HL200-ER-6	484	440	420	400	200	170	25	30	200	6.5x8	6.5	M8

## Static characteristics



## Circuit



## Electrical Specifications

Rated Voltage **500Vac**

Safety Standard	Model Number	Rated Current (A)	Test Voltage	Insulation Resistance	Leakage Current max.	Voltage Drop max.	Temperature Rise max.	Operating Temperature (°C)	Insertion losses		Weight typ.(kg)
									Normal Mode (MHz)	Common Mode (MHz)	
	3SUP-HL5-ER-6	5	Line-Case 2,000Vac 50/60Hz 60sec	Line-Case 6,000MΩmin (at 500Vdc)	8.0mA (at 500Vac 60Hz)	1.5Vac	35K	-25 ~ +50 (85°C with Temp. rise)	*0.15 ~ 30	0.15 ~ 10	3.0
	3SUP-HL10-ER-6	10							3.3		
	3SUP-HL15-ER-6	15							4.0		
	3SUP-HL30-ER-6	30							*0.15 ~ 10	5.2	
	3SUP-HL50-ER-6	50							6.5		
	3SUP-HL75-ER-6	75							12.0		
	3SUP-HL100-ER-6	100							12.5		
	3SUP-HL150-ER-6	150							23.5		
3SUP-HL200-ER-6	200	24.5									

Guaranteed attenuation is more than 30dB (\*more than 40dB) in normal mode and more than 25dB (\*more than 20dB) in common mode.