

Features

- Three phase filter delta.
- EN55011 class A.
- Wide range series (5~250A).



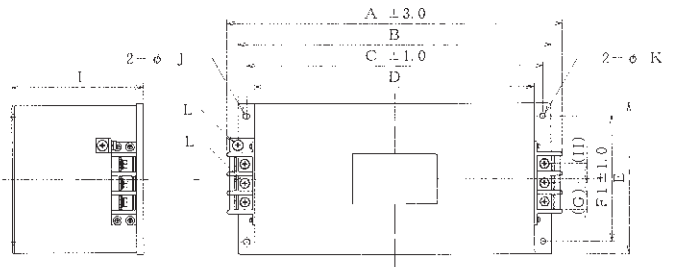
| Safety Agency : Standard | | File No. |
|--------------------------|------------|-----------|
| UL | : UL-1283 | E78644 |
| TUV | : EN133200 | R50056188 |

Applications

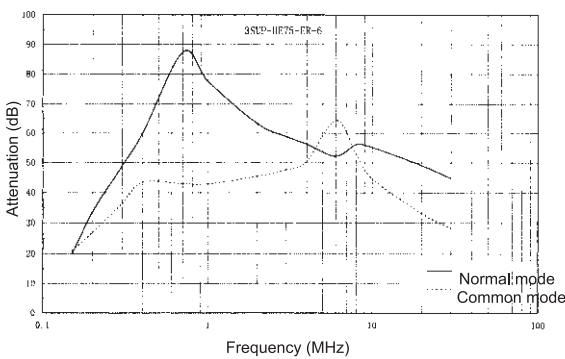
- Inverter power supplies, UPS, and Welding machines.



3SUP-HE□-ER-6 (5~200)



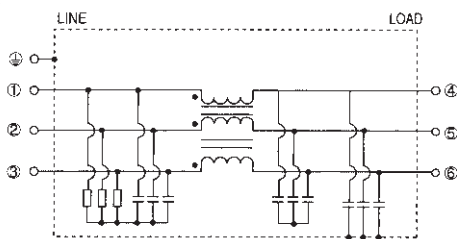
INSERTION LOSS CHARACTERISTICS



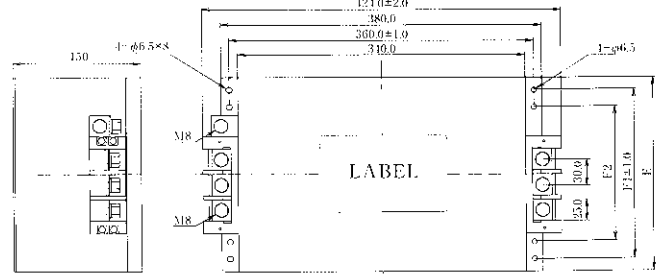
Dimensions

| | A | B | C | D | E | F1 | F2 | G | H | I | J | K | L |
|-----------------|-----|-----|-----|-----|-----|-----|-----|----|----|-----|-------|-----|----|
| 3SUP-HE5-ER-6 | 141 | 125 | 110 | 95 | 110 | 95 | — | 13 | 18 | 70 | 4.5×7 | 4.5 | M4 |
| 3SUP-HE10-ER-6 | 141 | 125 | 110 | 95 | 110 | 95 | — | 13 | 18 | 70 | 4.5×7 | 4.5 | M4 |
| 3SUP-HE20-ER-6 | 176 | 160 | 145 | 130 | 120 | 100 | — | 13 | 18 | 70 | 4.5×7 | 4.5 | M4 |
| 3SUP-HE30-ER-6 | 176 | 160 | 145 | 130 | 120 | 100 | — | 13 | 18 | 70 | 4.5×7 | 4.5 | M4 |
| 3SUP-HE50-ER-6 | 196 | 190 | 170 | 150 | 120 | 105 | — | 13 | 18 | 80 | 5.5×7 | 5.5 | M6 |
| 3SUP-HE75-ER-6 | 266 | 240 | 220 | 200 | 140 | 110 | — | 18 | 23 | 80 | 6.5×8 | 6.5 | M6 |
| 3SUP-HE100-ER-6 | 266 | 240 | 220 | 200 | 140 | 110 | — | 18 | 23 | 80 | 6.5×8 | 6.5 | M6 |
| 3SUP-HE150-ER-6 | 364 | 320 | 300 | 280 | 180 | 150 | — | 25 | 30 | 110 | 6.5×8 | 6.5 | M8 |
| 3SUP-HE200-ER-6 | 384 | 340 | 320 | 300 | 210 | 180 | — | 25 | 30 | 120 | 6.5×8 | 6.5 | M8 |
| 3SUP-HE250-ER-6 | 424 | 380 | 360 | 340 | 230 | 200 | 160 | 25 | 30 | 150 | 6.5×8 | 6.5 | M8 |

Circuit



3SUP-HE250-ER-6



Electrical Specifications

Rated Voltage **460AC**

| Safety Standard | Model Number | Rated Current (A) | Test Voltage | Insulation Resistance | Leakage Current (max) | Voltage Drop (max) | Temperature Rise (max) | Operating Temperature (°C) | Insertion losses | | | |
|-----------------|-----------------|-------------------|---|--|-------------------------------|--------------------|------------------------|----------------------------|-------------------|-------------------|----------|----------|
| | | | | | | | | | Normal Mode (MHz) | Common Mode (MHz) | | |
| | 3SUP-HE5-ER-6 | 5 | Line to Ground 2000Vrms 50/60Hz 60sec | Line to Ground 6000MΩmin (at 500VDC) | 3.5mA (at 460Vrms 60Hz) | 1.0Vrms | 35deg | -25 ~ +50 | *1 | 0.5 ~ 30 | *3 | 0.3 ~ 20 |
| | 3SUP-HE10-ER-6 | 10 | | | | | | | *1 | 0.5 ~ 30 | *3 | 0.3 ~ 20 |
| | 3SUP-HE20-ER-6 | 20 | | | | | | | *2 | 0.5 ~ 30 | *3 | 0.3 ~ 20 |
| | 3SUP-HE30-ER-6 | 30 | | | | | | | *2 | 0.5 ~ 30 | *3 | 0.3 ~ 20 |
| | 3SUP-HE50-ER-6 | 50 | | | | | | | *2 | 0.5 ~ 30 | *3 | 0.3 ~ 20 |
| | 3SUP-HE75-ER-6 | 75 | | | | | | | *2 | 0.5 ~ 30 | *3 | 0.3 ~ 20 |
| | 3SUP-HE100-ER-6 | 100 | | | | | | | *2 | 0.5 ~ 30 | *3 | 0.3 ~ 20 |
| 3SUP-HE150-ER-6 | 150 | *2 | | | | | | | 0.5 ~ 30 | *4 | 0.5 ~ 20 | |
| | 3SUP-HE200-ER-6 | 200 | | | | | | | *2 | 0.5 ~ 30 | *4 | 0.5 ~ 20 |
| | 3SUP-HE250-ER-6 | 250 | *3 | 0.5 ~ 30 | *4 | 0.5 ~ 20 | | | | | | |

Guaranteed attenuation of *1 is more than 40dB, *2 is more than 30dB, *3 is more than 25dB and *4 is more than 20dB.