



3SUP□-AE SERIES

NOISE FILTERS



Features

- Three phase filter delta (250Vac).
- 30% smaller size of former model.
- The capacitance of X and Y capacitor is selectable.

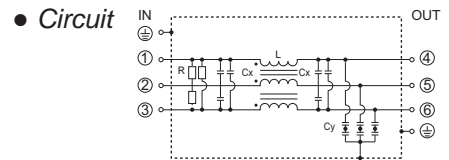
Applications

- Inverter power supplies, UPS, NC controlled machineries.

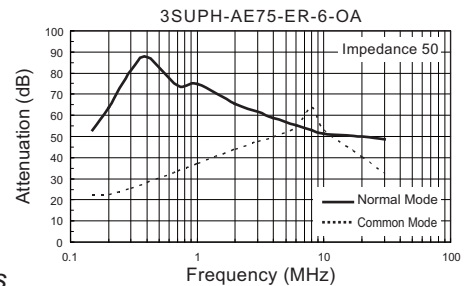
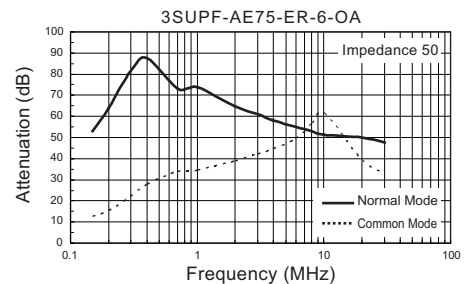


Safety Standard		File No.
UL	:UL1283	E78644
cUL	:C22.2, No.8-M1986	
SEMKO	:EN60939	SE/0142-7

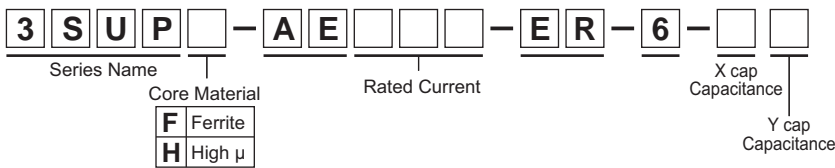
The "ENEC" mark is a common European product certification mark based on testing to harmonised European safety standard.



Static characteristics

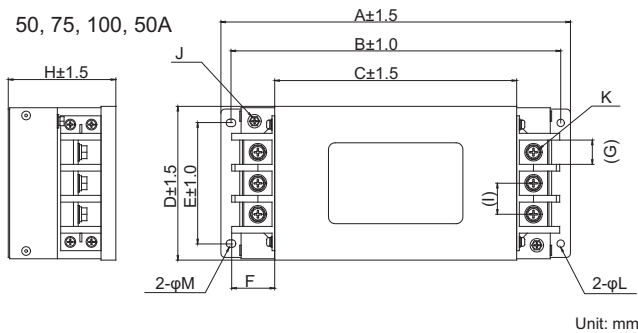


Model numbering system



Dimensions

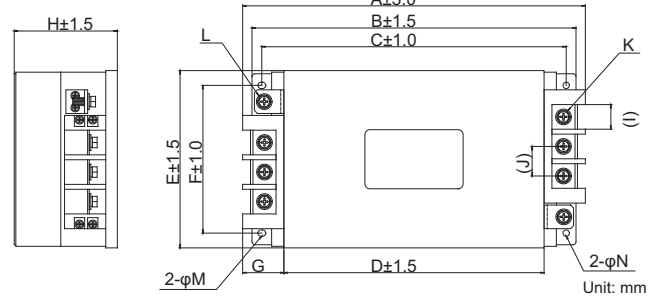
50, 75, 100, 50A



Model Number	Dimensions (mm)												
	A	B	C	D	E	F	G	H	I	J	K	L	M
3SUP□-AE50	185	170	120	110	85	23	13	80	18	M4	M6	5.5	5.5x7
3SUP□-AE75	260	245	182	116	90	33	18	80	23	M4	M6	5.5	5.5x7
3SUP□-AE100	260	245	182	116	90	33	18	80	23	M4	M6	5.5	5.5x7
3SUP□-AE150	310	290	220	163	133	42	25	100	30	M6	M8	6.5	6.5x8

Dimensions

200, 250A



Model Number	Dimensions (mm)													
	A	B	C	D	E	F	G	H	I	J	K	L	M	N
3SUP□-AE200	349	330	310	265	180	150	42	105	25	30	30	M8	6.5x8	6.5
3SUP□-AE250	364	345	325	280	180	150	42	120	25	30	30	M8	6.5x8	6.5

Electrical Specifications

Rated Voltage **250Vac**

Safety Standard	Model Number *1	Rated Current (A)	Test Voltage	Insulation Resistance	Leakage Current max. *2	Voltage Drop max.	Temperature Rise max.	Operating Temperature (°C)	Weight typ.(kg)
	3SUP□-AE50-ER-6-OA	50	Line-Case 2,000Vac 50/60Hz 60sec	Line-Case 6,000M Ω min (at 500Vdc)	1.1mA (at 250Vac 60Hz)	1.0Vac	50K	-25 ~ +50 (100°C with Temp. rise)	2.0
	3SUP□-AE75-ER-6-OA	75							3.2
	3SUP□-AE100-ER-6-OA	100							7.0
	3SUP□-AE150-ER-6-OA	150							8.5
	3SUP□-AE200-ER-6-OA	200							10.0
3SUP□-AE250-ER-6-OA	250								

*1 Standard type

*2 Leakage current of Standard type