



SUP-PH-E1PR / -R SERIES

NOISE FILTERS



Features

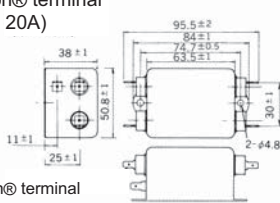
- Low range high attenuation effects by super high μ material (20~30dB at 10,000Hz). Excellent pulse absorption (more than 25dB attenuation with 1,500V pulse).
- Two types of leakage current
 - less than 70 μ A
 - less than 10 μ A (applies to medical equipment)
- Three terminal styles (Faston®, solder and screw).
- Bleeder resistor for electric shock protection.

Applications

- Information processing devices (for Europe), Medical equipments, Office appliances and Various control systems.

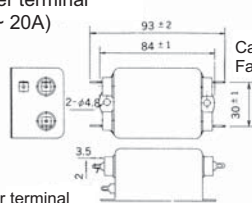
Dimensions

Faston® terminal
(5A ~ 20A)



Faston® terminal
(#250)

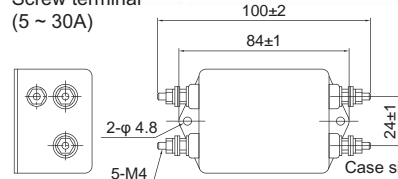
Solder terminal
(5A ~ 20A)



Solder terminal

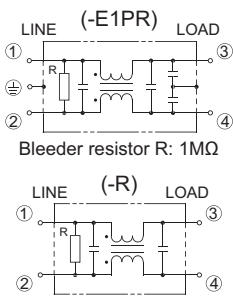
Case size is the same as Faston® terminal type

Screw terminal
(5 ~ 30A)

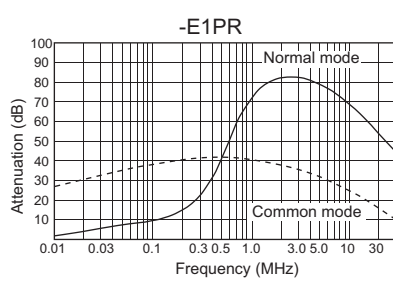


Case size is the same as Faston® terminal type

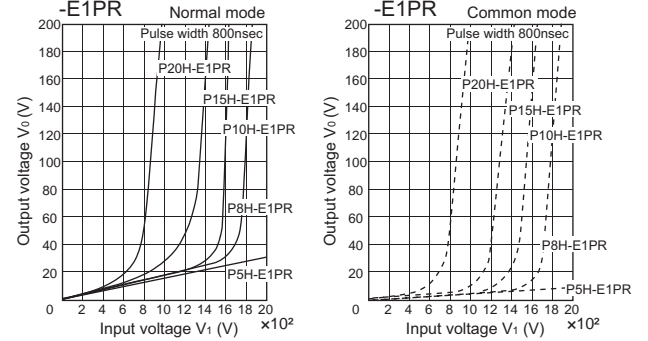
Circuit



Static characteristics



TVSS characteristics



Unit: mm

Electrical Specifications

Rated Voltage **250Vac**

Safety Standard	Model Number	Rated Current (A)	Test Voltage	Insulation Resistance	Leakage Current max.	Voltage Drop max.	Temperature Rise max.	Operating Temperature (°C)	Insertion losses		Weight typ.(g)												
									Normal Mode (MHz)	Common Mode (MHz)													
RU	SUP-P5H-E1PR($\frac{5}{4}$)	5	Line to Line 1,000Vac 50/60Hz 60sec	Line to Case 6,000M Ω min (at 500Vdc)	70 μ A (at 250Vac 60Hz)	1.0Vac	35K	-25~ +50 (85°C with Temp. rise)	0.5 ~ 20	0.05 ~ 20	275												
	SUP-P8H-E1PR($\frac{8}{4}$)	8							0.6 ~ 30	0.09 ~ 30													
	SUP-P10H-E1PR($\frac{10}{4}$)	10							0.7 ~ 30	0.1 ~ 30													
	SUP-P15H-E1PR($\frac{15}{4}$)	15							1.5 ~ 30	3.0 ~ 30													
SF	SUP-P20H-E1PR($\frac{20}{4}$)	20							Line to Case 2,000Vac 50/60Hz 60sec	10 μ A (at 250Vac 60Hz)		1.0Vac	35K	-25~ +50 (85°C with Temp. rise)	3.0 ~ 30	4.0 ~ 30	275						
	*SUP-P30H-E1PR-4	30													0.5 ~ 20	-							
	SUP-P5H-R($\frac{5}{4}$)	5													0.6 ~ 30	-							
	SUP-P8H-R($\frac{8}{4}$)	8													0.7 ~ 30	-							
S	SUP-P10H-R($\frac{10}{4}$)	10													Line to Case 2,000Vac 50/60Hz 60sec	10 μ A (at 250Vac 60Hz)		1.0Vac	35K	-25~ +50 (85°C with Temp. rise)	1.0 ~ 30	-	275
	SUP-P15H-R($\frac{15}{4}$)	15																			1.5 ~ 30	-	
	SUP-P20H-R($\frac{20}{4}$)	20	3.0 ~ 30	-																			
	*SUP-P30H-R-4	30	3.0 ~ 30	-																			
E14	SUP-P5H-E1PR($\frac{5}{4}$)	5	Line to Case 2,000Vac 50/60Hz 60sec	10 μ A (at 250Vac 60Hz)	1.0Vac	35K	-25~ +50 (85°C with Temp. rise)	0.5 ~ 20			-										275		
	SUP-P8H-E1PR($\frac{8}{4}$)	8						0.6 ~ 30			-												
	SUP-P10H-E1PR($\frac{10}{4}$)	10						0.7 ~ 30	-														
	SUP-P15H-E1PR($\frac{15}{4}$)	15						1.5 ~ 30	-														

Guaranteed attenuation is more than 40dB in normal mode and more than 35dB in common mode for SUP-PH-E1PR series.
(more than 25dB at 15A and more than 20dB at 20A, 30A)
*only screw terminal type