



SUP-ET SERIES

NOISE FILTER



Features

- Wiring with Faston terminal
- High attenuation by using a ferrite core with broad frequency characteristic
- Wide rating up (5, 8, 10, 15, 20 Ampere)
- Bleeder resistor for electric shock protection
- DIN rail type is option

Applications

- Information processing machines, Copiers, Fax machines, and Various control systems

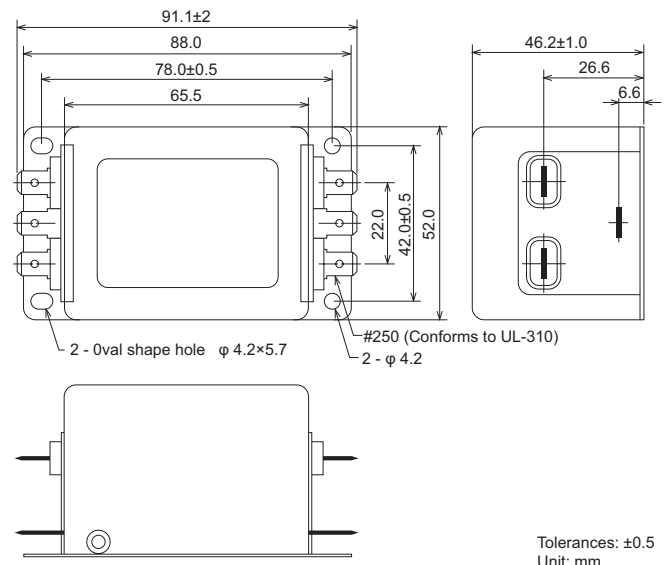


Safety Standard		File No.
UL	:UL1283	E78644
cUL	:C22.2, No.8-M1986	
SEMKO	:EN60939	SE/0142-2

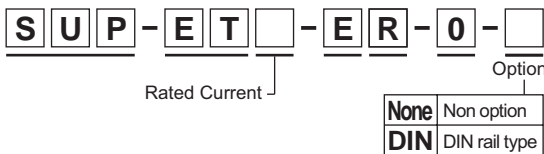
The "ENEC" mark is a common European product certification mark based on testing to harmonised European safety standard.



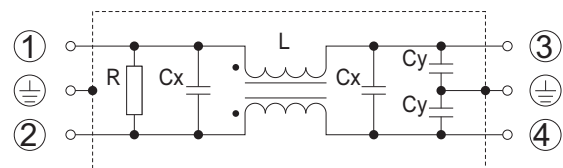
Dimensions (5 ~ 20A)



Model numbering system



Circuit



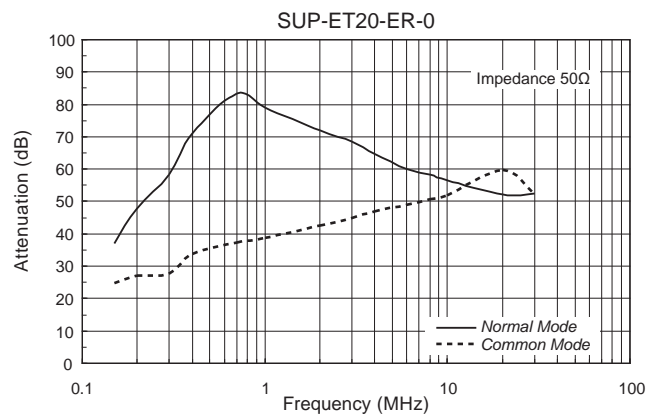
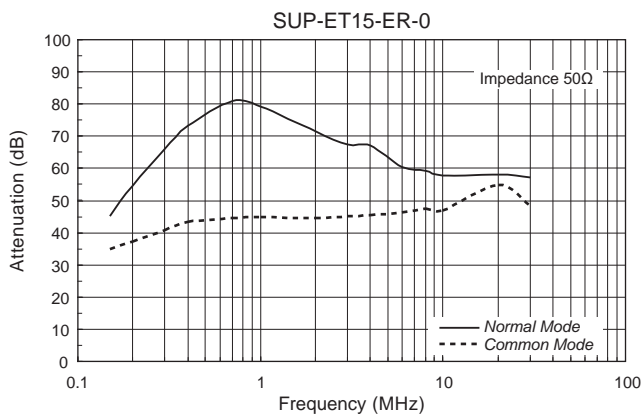
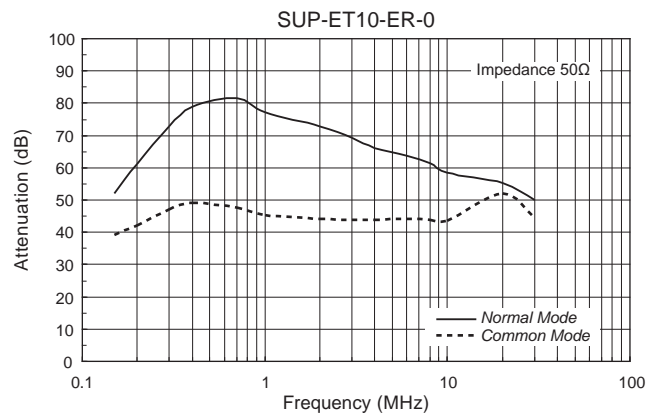
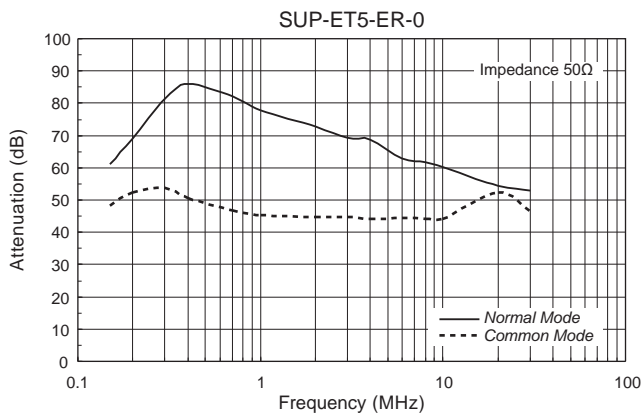
Electrical Specifications

Rated Voltage **250Vac**

Safety Standard	Model Number	Rated Current (A)	Test Voltage	Insulation Resistance	Leakage Current max.	Voltage Drop max.	Temperature Rise max.	Operating Temperature (°C)	Insertion losses		Weight typ.(g)
									Normal Mode (MHz)	Common Mode (MHz)	
	SUP-ET5-ER-0	5	Line to Case 1,500Vac 50/60Hz 60sec	Line to Case 100MΩmin (at 500Vdc)	0.6mA (at 250Vac 60Hz)	1.0Vac	45K	-25 ~ +55 (100°C with Temp. rise)	0.2 ~ 20	0.15 ~ 20	250
	SUP-ET8-ER-0	8								0.2 ~ 20	
	SUP-ET10-ER-0	10								0.5 ~ 20	
	SUP-ET15-ER-0	15								2.0 ~ 20	
	SUP-ET20-ER-0	20								2.0 ~ 20	

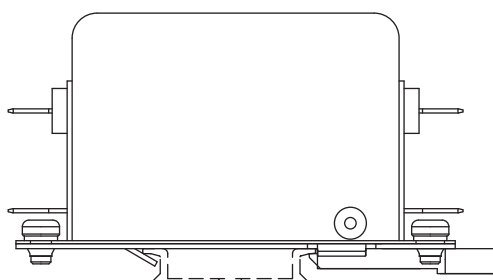
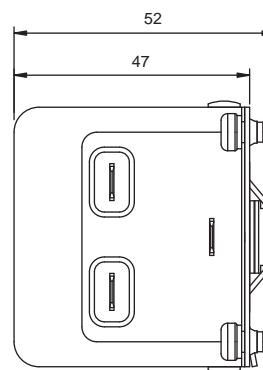
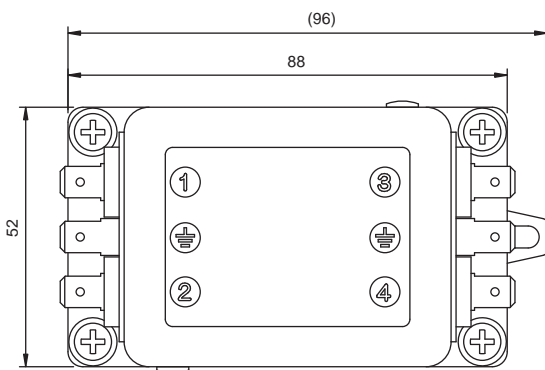
Guaranteed attenuation is more than 40dB in normal mode and more than 30dB in common mode.

• Static characteristics



• Dimensions

DIN rail type (option)



Tolerances: ±0.5
Unit: mm

- Note when installing EMI filter on DIN rail
Even though the ground connects correctly through the DIN rail, may not get noise attenuation. Be sure to connect the FG ground of EMI filter to the ground directory.