

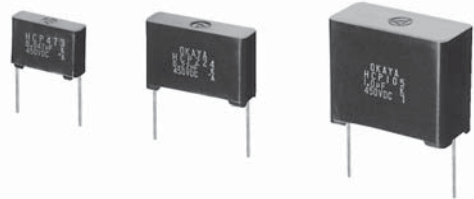
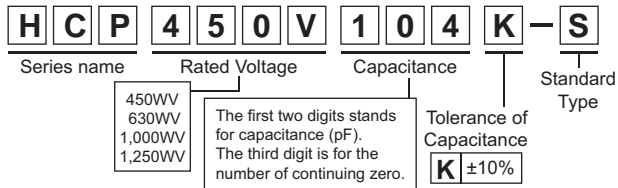


Features

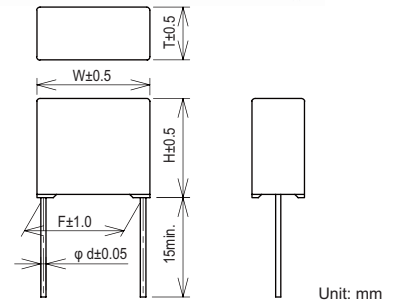
- Compact size and resin case.
- Improved safety and suppressing self-heating.

Applications

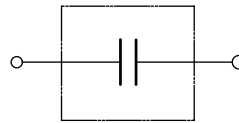
- High frequency circuit, High voltage resonant circuit, Snubber circuit and Protection of semiconductors such as IGBT, IPM and MOSFET.
- Model numbering system



• *Dimensions*



• *Circuit*



Electrical Specifications

| Rated Voltage | Model Number | Capacitance μF±10% | Dimensions (mm) | | | | | Dissipation Factor | Test Voltage | Insulation Resistance |
|----------------|----------------|-----------------------|-----------------|------|------|------|-----|----------------------------|---------------------------------------|---|
| | | | W | H | T | F | φ d | | | |
| 450Vdc | HCP450V473K-S | 0.047 | 17.0 | 12.0 | 5.0 | 15.0 | 0.6 | 0.001max. (at 1k±100Hz) | Rated Voltage ×1.75Vdc (2~5sec) | C≤0.33μF 50,000MΩmin. (at 20°C, 100Vdc) C>0.33μF 20,000Ω·Fmin. (at 20°C, 100Vdc) |
| | HCP450V683K-S | 0.068 | 17.0 | 12.5 | 5.5 | 15.0 | 0.8 | | | |
| | HCP450V104K-S | 0.1 | 17.0 | 13.5 | 6.5 | 15.0 | 0.8 | | | |
| | HCP450V154K-S | 0.15 | 17.0 | 15.0 | 8.0 | 15.0 | 0.8 | | | |
| | HCP450V224K-S | 0.22 | 25.0 | 16.0 | 6.5 | 22.5 | 0.8 | | | |
| | HCP450V334K-S | 0.33 | 25.0 | 17.5 | 8.0 | 22.5 | 0.8 | | | |
| | HCP450V474K-S | 0.47 | 30.0 | 22.0 | 11.0 | 27.5 | 0.8 | | | |
| | HCP450V684K-S | 0.68 | 30.0 | 22.0 | 11.0 | 27.5 | 0.8 | | | |
| 630Vdc | HCP630V103K-S | 0.01 | 17.0 | 12.0 | 5.0 | 15.0 | 0.6 | | | |
| | HCP630V153K-S | 0.015 | 17.0 | 12.0 | 5.0 | 15.0 | 0.6 | | | |
| | HCP630V223K-S | 0.022 | 17.0 | 12.0 | 5.0 | 15.0 | 0.6 | | | |
| | HCP630V333K-S | 0.033 | 17.0 | 12.0 | 5.0 | 15.0 | 0.6 | | | |
| | HCP630V473K-S | 0.047 | 17.0 | 12.5 | 5.5 | 15.0 | 0.8 | | | |
| | HCP630V683K-S | 0.068 | 17.0 | 13.5 | 6.5 | 15.0 | 0.8 | | | |
| | HCP630V104K-S | 0.1 | 17.0 | 15.0 | 8.0 | 15.0 | 0.8 | | | |
| | HCP630V154K-S | 0.15 | 25.0 | 17.5 | 8.0 | 22.5 | 0.8 | | | |
| | HCP630V224K-S | 0.22 | 25.0 | 17.5 | 8.0 | 22.5 | 0.8 | | | |
| | HCP630V334K-S | 0.33 | 25.0 | 19.5 | 10.0 | 22.5 | 0.8 | | | |
| | HCP630V474K-S | 0.47 | 30.0 | 22.0 | 11.0 | 27.5 | 0.8 | | | |
| | HCP630V684K-S | 0.68 | 30.0 | 24.5 | 13.5 | 27.5 | 0.8 | | | |
| 1000Vdc | HCP1000V104K-S | 0.1 | 25.0 | 17.5 | 8.0 | 22.5 | 0.8 | | | |
| | HCP1000V474K-S | 0.47 | 30.5 | 28.0 | 16.0 | 27.5 | 1.0 | | | |
| | HCP1000V105K-S | 1.0 | 41.0 | 32.5 | 17.5 | 37.5 | 1.0 | | | |
| 1250Vdc | HCP1250V103K-S | 0.01 | 17.0 | 15.0 | 8.0 | 15.0 | 0.8 | | | |
| | HCP1250V153K-S | 0.015 | 25.0 | 16.0 | 6.5 | 22.5 | 0.8 | | | |
| | HCP1250V223K-S | 0.022 | 25.0 | 16.0 | 6.5 | 22.5 | 0.8 | | | |
| | HCP1250V333K-S | 0.033 | 25.0 | 17.5 | 8.0 | 22.5 | 0.8 | | | |
| | HCP1250V473K-S | 0.047 | 25.0 | 19.5 | 10.0 | 22.5 | 0.8 | | | |
| | HCP1250V683K-S | 0.068 | 30.0 | 22.0 | 11.0 | 27.5 | 0.8 | | | |
| | HCP1250V104K-S | 0.1 | 30.0 | 24.5 | 13.5 | 27.5 | 0.8 | | | |
| | HCP1250V154K-S | 0.15 | 30.5 | 28.0 | 16.0 | 27.5 | 1.0 | | | |
| | HCP1250V224K-S | 0.22 | 41.0 | 28.0 | 15.5 | 37.5 | 1.0 | | | |
| | HCP1250V334K-S | 0.33 | 41.0 | 28.0 | 15.5 | 37.5 | 1.0 | | | |
| HCP1250V474K-S | 0.47 | 41.0 | 32.5 | 17.5 | 37.5 | 1.0 | | | | |

It is possible to use from more than 85°C to 105°C by derating of rated voltage.

Operating Temperature: -40~+85°C

● *Permissible current data*

