

Features

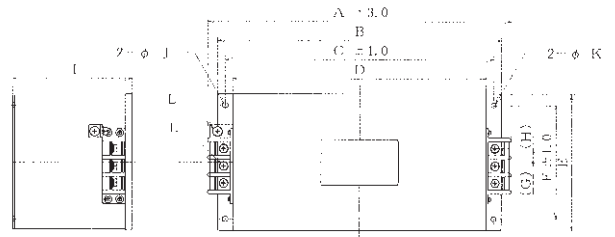
- Three phase filter delta.
- EN55011 class A & B.
- Applies to CE marking.

Applications

- Inverter power supplies, UPS, Servo-operated machinery.



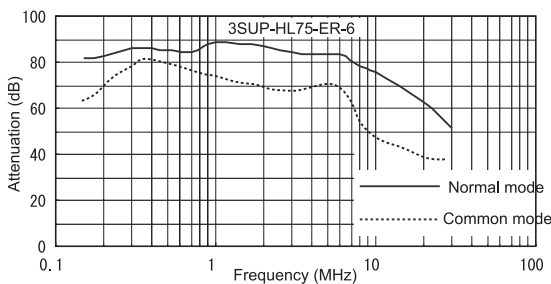
Safety Agency : Standard		File No.
UL	: UL-1283	E78644
TUV	: EN133200	R50056176



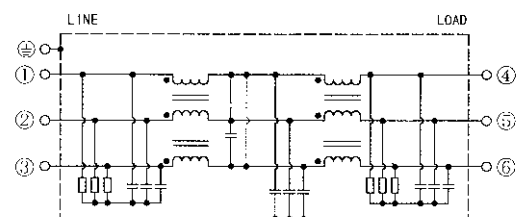
Dimensions

	A	B	C	D	E	F	G	H	I	J	K	L
3SUP-HL5-ER-6	226	220	195	180	100	85	13	18	120	5.5 × 7	5.5	M4
3SUP-HL10-ER-6	226	220	195	180	100	85	13	18	120	5.5 × 7	5.5	M4
3SUP-HL15-ER-6	226	220	195	180	100	85	13	18	130	5.5 × 7	5.5	M4
3SUP-HL30-ER-6	246	230	215	200	100	85	13	18	140	5.5 × 7	5.5	M4
3SUP-HL50-ER-6	286	270	255	240	120	90	13	18	150	5.5 × 7	5.5	M6
3SUP-HL75-ER-6	396	370	350	330	170	140	18	23	155	6.5 × 8	6.5	M6
3SUP-HL100-ER-6	396	370	350	330	170	140	18	23	155	6.5 × 8	6.5	M6
3SUP-HL150-ER-6	484	440	420	400	200	170	30	25	200	6.5 × 8	6.5	M8
3SUP-HL200-ER-6	484	440	420	400	200	170	30	25	200	6.5 × 8	6.5	M8

INSERTION LOSS CHARACTERISTICS



Circuit



Electrical Specifications

Rated Voltage **500VAC**

Safety Agency	Model Number	Rated Current (A)	Test Voltage	Insulation Resistance	Leakage Current (max)	Voltage Drop (max)	Temperature Rise (max)	Operating Temperature (°C)	Insertion losses	
									Normal Mode (MHz)	Common Mode (MHz)
	3SUP-HL5-ER-6	5	Line to Ground 2000Vrms 50/60Hz 60sec	Line to Ground 6000MΩmin (at 500VDC)	8.0mA (at 500Vrms 60Hz)	1.5Vrms	35deg	-25 ~ +50	*0.15 ~ 30	0.15 ~ 10
	3SUP-HL10-ER-6	10							*0.15 ~ 30	0.15 ~ 10
	3SUP-HL15-ER-6	15							*0.15 ~ 30	0.15 ~ 10
	3SUP-HL30-ER-6	30							0.15 ~ 30	*0.15 ~ 10
	3SUP-HL50-ER-6	50							0.15 ~ 30	*0.15 ~ 10
	3SUP-HL75-ER-6	75							0.15 ~ 30	0.15 ~ 10
	3SUP-HL100-ER-6	100							0.15 ~ 30	0.15 ~ 10
	3SUP-HL150-ER-6	150	0.15 ~ 30	0.15 ~ 10						
	3SUP-HL200-ER-6	200	0.15 ~ 30	0.15 ~ 10						

Guaranteed attenuation is more than 30dB (*more than 40dB) in normal mode and more than 25dB (*more than 20dB) in common mode.