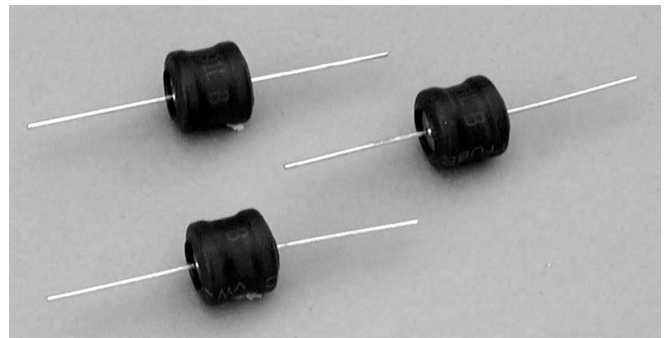




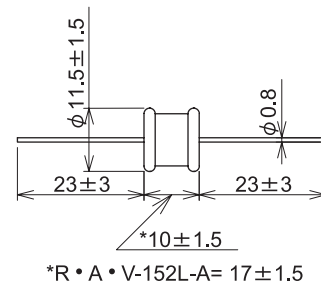
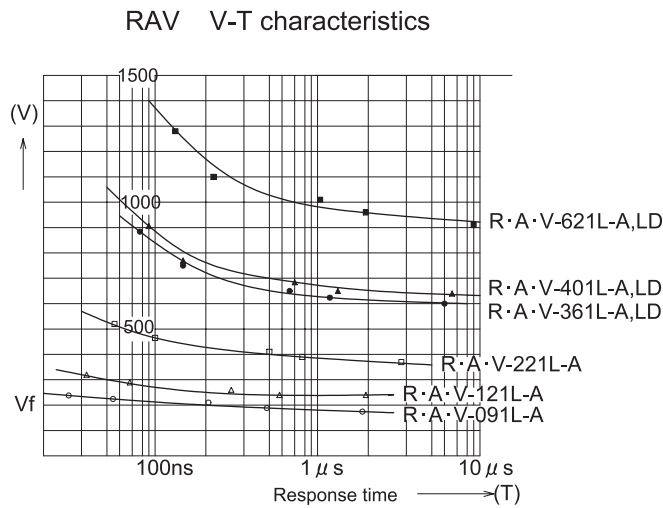
● R·A·V-L-A (for protecting network line)

RAV was developed to absorb high current surge such as indirect lighting. Specially, the RAV applied to communication circuits will protect it. The RAV is suitable for use with equipment which requires high reliability protection from external surges.

1. Response time: 50ns max.
2. Life: Possible to absorb 1000A for 300 times repeatedly (surge wave form: 8/20 ms).

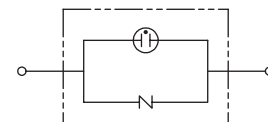


Dimensions



Unit: mm

Circuit



Electrical Specifications

Model Number	*Clamp Voltage V _{1.0} ±10%	Peak Surge Current 8/20µs(A)	Peak Surge Voltage 1.2/50µs(A)	Response Time(ns)	Capacitance (PF) Max.	Operating Temp Range (°C)
R·A·V-091L-A	90	2400	20k	50	150	-20 ~ +70
R·A·V-121L-A	120				130	
R·A·V-181L-A	180				100	
R·A·V-221L-A	220				90	
R·A·V-361L-A	360				30	
R·A·V-401L-A	400				30	
R·A·V-621L-A	620				40	
R·A·V-901L-A	900				30	
R·A·V-152L-A	1500				20	

*Equivalent varistor voltage@1MA