



CRE, 3CRE, 6CRE SERIES

SPARK QUENCHER



Features

- Broad use in industrial applications.
- External mounting tab.
- 1/2 watt non-inductive, high pulse resistor.
- Three phase delta connection (3 CRE). Three phase three line (6 CRE).

Applications

- Automatic machines and industrial machinery.

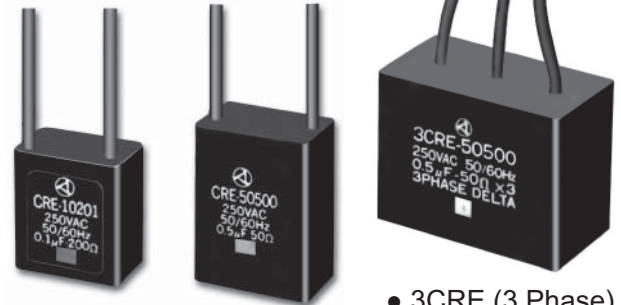
Model numbering system

Supported number		Series name		Capacitance		Resistance	
None	1 Phase	C	R	10	0.1 μ F	201	200 Ω
3	3 Phase	E		20	0.2 μ F	151	150 Ω
6	3 Phase			30	0.3 μ F	680	68 Ω
	3 Line			50	0.5 μ F	500	50 Ω

The combination of Resistance and Capacitance is shown in following chart.



Safety Standard		File No.
UL	:UL60384-14	E47474
VDE	:IEC/EN 60384-14	128527

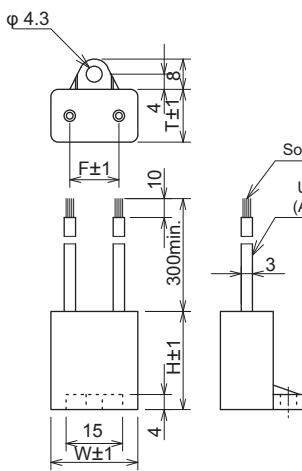


• CRE Series

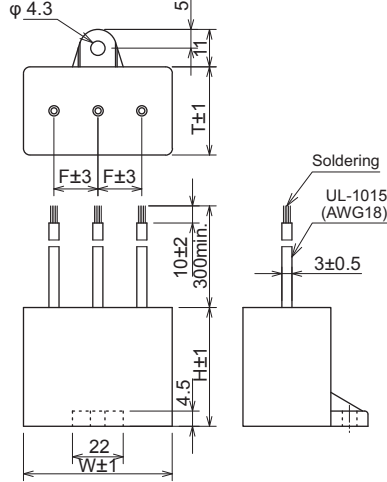
• 3CRE (3 Phase)
• 6CRE (3 Phase)

Dimensions

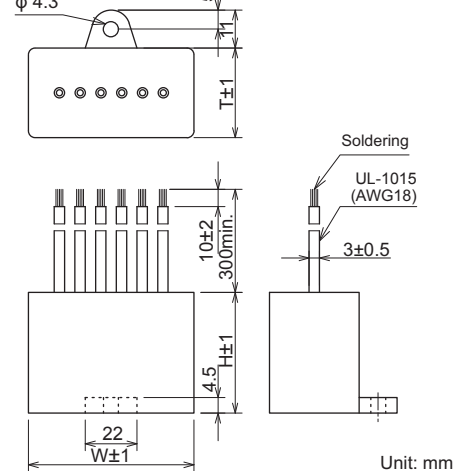
CRE



3CRE

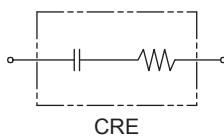


6CRE

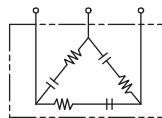


Unit: mm

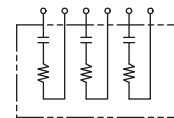
Circuit



CRE



3CRE



6CRE

Electrical Specifications

Rated Voltage **250Vac**

Safety Standard	Class	Model Number	Capacitance μ F \pm 20%	Resistance Ω \pm 30%	Dimensions				Pulse condition (max.)				Peak Pulse Voltage	Test Voltage	Insulation Resistance
					W	H	T	F	Peak to peak	Pulse width	Repetitive frequency	Pulse width (sec) x Frequency(Hz)			
	X2	CRE-10201	0.1	200(1/2W)	23	26	14	13	700V	50msec.	360Hz.	800V max.	Line to Line 625Vac 50/60Hz 60sec	Line to Line 10,000M Ω min.	
		CRE-20151	0.2	150(1/2W)											
		CRE-30680	0.3	68(1/2W)											
		CRE-50500	0.5	50(1/2W)											
		3CRE-30680*	0.3/1 phase	68 (1/2W) /1 phase	44	35	26	-		70msec.					0.45
		3CRE-50500	0.5	50(1/2W)											0.15
6CRE-50500	/1 phase	/1 phase	48	-	-	-	0.07	0.1	0.07	Line to Case 2,000Vac 50/60Hz 60sec	Line to Case 100,000M Ω min. (at 500Vdc)				

* 3CRE-30680 is not UL approved.

Operating Temperature: -40~+85°C