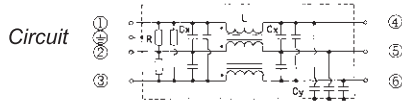
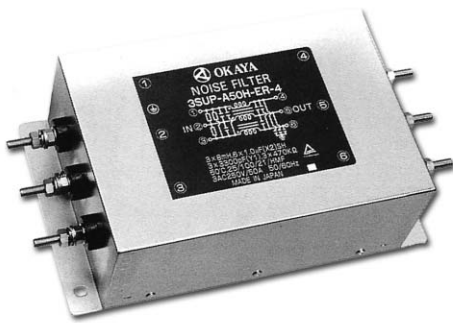


Features

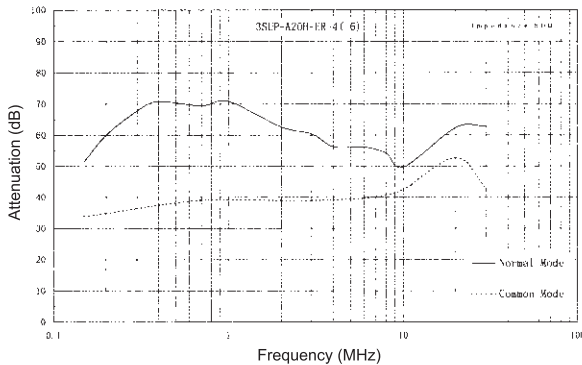
- Three phase filter delta.
- Leak current lower than 1.0~1.5mA (250V_{AC}, 60Hz).
- The super high μ core allows high attenuation.

Applications

- Inverter power supplies, UPS, NC control systems and Welding machines.

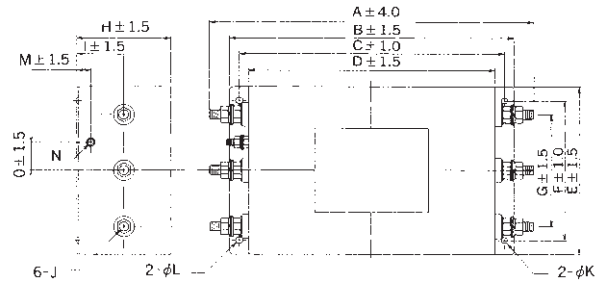


Static characteristics



Safety Agency : Standard		File No.
UL	: UL-1283	E78644
TUV	: EN133200	R50056158

3SUP-A□H-ER-4 (10, 20, 30, 50, 75, 100)

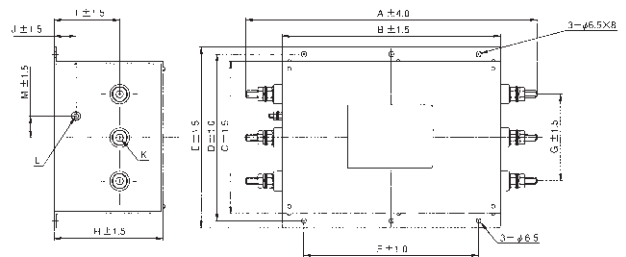


Dimensions

	A	B	C	D	E	F	G	H	I	J	K	L	M	N	O
3SUP-A10H-ER-4	188	160	145	130	110	95	70	55	25	M5	$\phi 4.5$	$\phi 4.5 \times 7$	10	M4	17.5
3SUP-A20H-ER-4	228	200	185	170	110	95	70	60	30	M5	$\phi 4.5$	$\phi 4.5 \times 7$	10	M4	17.5
3SUP-A30H-ER-4	228	200	185	170	110	95	70	60	30	M5	$\phi 4.5$	$\phi 4.5 \times 7$	10	M4	17.5
3SUP-A50H-ER-4	272	240	220	200	140	110	70	80	40	M6	$\phi 6.5$	$\phi 6.5 \times 8$	15	M4	20
3SUP-A75H-ER-4	312	280	260	240	180	150	120	80	40	M8	$\phi 6.5$	$\phi 6.5 \times 8$	15	M6	30
3SUP-A100H-ER-4	342	300	280	260	180	150	120	100	50	M10	$\phi 6.5$	$\phi 6.5 \times 8$	15	M6	30

3SUP-A□H-ER-4 (150~250)

Tolerance: ± 0.5
Unit: mm



Dimensions

Model number	A	B	C	D	E	F	G	H	I	J	K	L	M
3SUP-A150H-ER-4	360	280	200	220	240	240	120	110	50	20	M10	M6	30
3SUP-A200H-ER-4	380	280	200	220	240	240	120	110	50	20	M12	M6	30
3SUP-A250H-ER-4	400	300	210	230	250	240	120	150	90	30	M12	M6	30

Electrical Specifications

Rated Voltage **250VAC**

Safety Agency	Model Number	Rated Current (A)	Test Voltage	Insulation Resistance	Leakage Current (max)	Voltage Drop (max)	Temperature Rise (max)	Operating Temperature (°C)	Insertion losses			
									Normal Mode (MHz)	Common Mode (MHz)		
	3SUP-A10H-ER-4	10	Line to Line 1000Vrms 50/60Hz 60sec Line to Ground 2000Vrms 50/60Hz 60sec	Line to Line 6000M Ω min (at 500V _{DC})	1.0mA (at 250Vrms 60Hz)	Less than 1.0Vrms	35deg	-25 ~ +50	*1	0.15 ~ 30	*4	0.15 ~ 30
	3SUP-A20H-ER-4	20							*2	0.2 ~ 30	*4	0.2 ~ 30
	3SUP-A30H-ER-4	30							*2	0.2 ~ 30	*4	0.2 ~ 30
	3SUP-A50H-ER-4	50							*2	0.2 ~ 30	*5	0.2 ~ 30
	3SUP-A75H-ER-4	75							*3	0.2 ~ 30	*4	0.6 ~ 30
	3SUP-A100H-ER-4	100							*3	0.3 ~ 30	*4	1.0 ~ 30
	3SUP-A150H-ER-4	150							*3	0.3 ~ 30	*4	2.0 ~ 30
3SUP-A200H-ER-4	200	*3	0.3 ~ 20	*4	2.0 ~ 30							
3SUP-A250H-ER-4	250	*5	0.2 ~ 20	*5	1.0 ~ 10							
	3SUP-A250H-ER-4A	250							*5	0.2 ~ 20	*5	2.0 ~ 10

Guaranteed attenuation of *1 is 40dB, *2 is 35dB, *3 is 30dB, *4 is 25dB, *5 is more than 20dB.